



**DEMO SOUND & LIGHTING SYSTEMS**

[WWW.DEMOSESISIK.COM](http://WWW.DEMOSESISIK.COM)

## **DEMO SOUND & LIGHT SYSTEMS**

While maintaining 22 years of SOUND & LIGHT industry leadership, today it is far beyond being a sound-lighting company that only leases technical equipment.

We specialise in:

- concerts
- Wedding and Invitation Organizations
- Ceremonies, Facility Openings and Celebrations
- Meetings, Seminars and Conferences
- Presentation and Product Launches

We continue to provide quality service with 22 years of sector leadership and equipment capacity and experienced staff that can provide all kinds of technical services in concerts, fashion shows, conferences, openings, weddings and private organizations beyond just being a sound and light company that rents only technical equipment today.

## **OUR VISION**

Universal, prestigious and market value, which exemplifies its competitors, who provide common and reliable services all over Istanbul, accepting everyone and every part of their customers and human resources as the most valuable asset, constantly creating a difference and value worthy of its deeply rooted past. To be a high company.

## **OUR MISSION**

By understanding customer needs and expectations in the best way, providing them with the most appropriate solution and value proposals from the right channel, delivering a wide range of products and service channels with wide service and delivery channels to every part of Istanbul in the fastest and most effective manner, To be a firm that operates with sustainable profitability and efficiency in world standards and keeps customer satisfaction superior than anything else.

# OUR EQUIPMENT

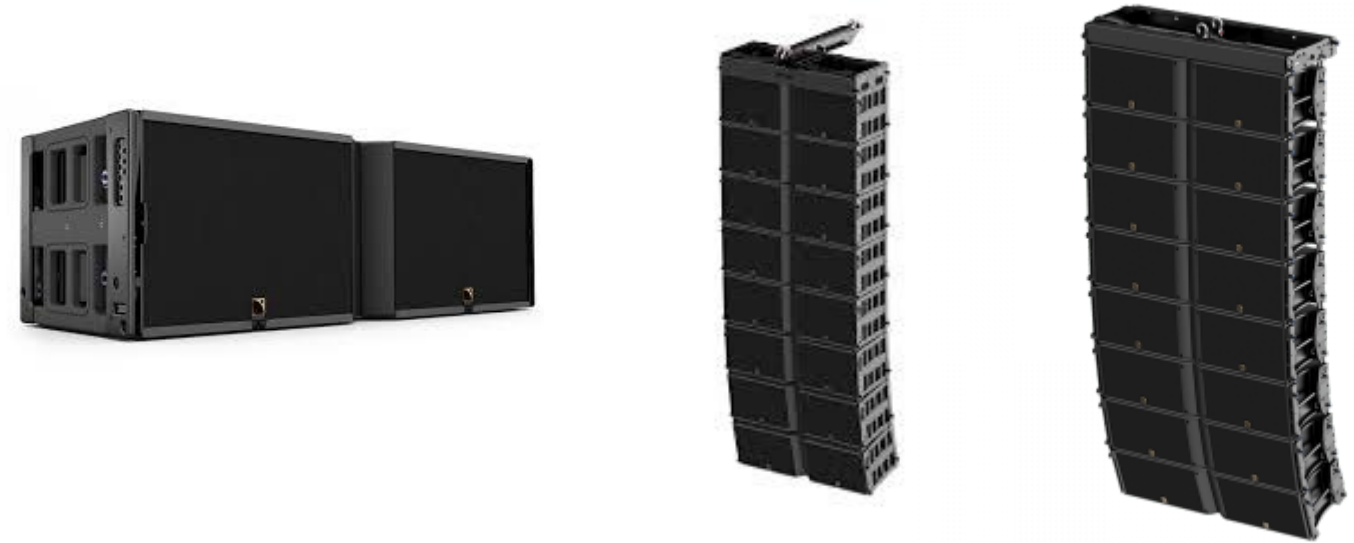


QUANTITY

PA SYSTEM

18

L-ACOUSTICS K1 /K2/ K3 SPEAKER SYSTEM



16

L-ACOUSTICS KS28 SUB BASS



18

L-ACOUSTICS DV-DOSCH SPEAKER SYSTEM





QUANTITY

PA SYSTEM

16

L-ACOUSTICS KARA



24

L-ACOUSTICS SB-28



12

L-ACOUSTICS AMP LA12X



12

L-ACOUSTICS AMP LA8





# OUR EQUIPMENT

[www.demosesisik.com](http://www.demosesisik.com)



QUANTITY

MONITOR SYSTEM

16

L-ACOUSTICS 112P



12

L-ACOUSTICS IISXT HIQ



4

L-ACOUSTICS DV SUB



# OUR EQUIPMENT



QUANTITY

MONITOR SPEAKER

16

L-ACOUSTICS ARCS WI / FO + SB18



24

SENNHEISER G4 IEM MONITOR



24

RCF ART 315



# OUR EQUIPMENT

[www.demosesisik.com](http://www.demosesisik.com)



QUANTITY

SOUND CONSOLS

2

DIGICO SD8 DIGITAL MIXER



2

YAMAHA CL5 DIGITAL MIXER



1

ALLEN & HEAT AVANTIS DIGITAL MIXER





# OUR EQUIPMENT

---

[www.demosesisik.com](http://www.demosesisik.com)



QUANTITY

SOUND CONSOLS

4

BEHRINGER X32 DIGITAL MIXER



6

SOUNDCRAFT 24CH ANALOG FX





# OUR EQUIPMENT



## QUANTITY

## SOUND CONSOLS

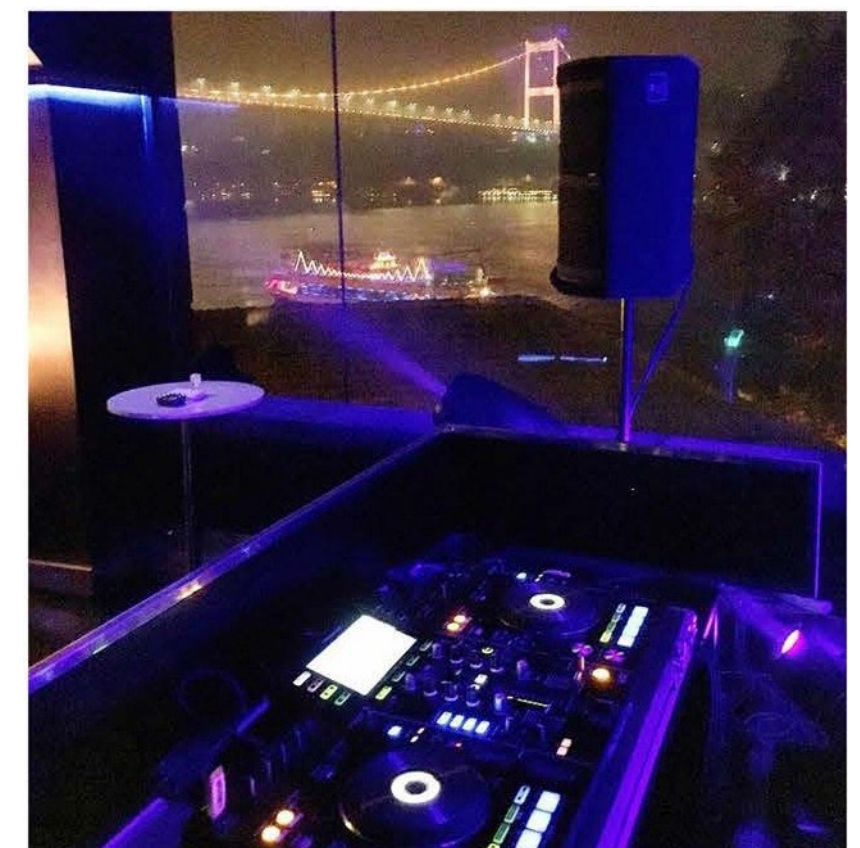
- 1 RCF 12 CH FX
- 2 SOUNDCRAFT 12 CH ANALOG
- 1 BEHRINGER XENYX 1002B 8CH
- 1 YAMAHA NG102C 10CH
- 3 PRESS MIXER
- 2 DIGICO MADIRACK
- 1 ALLEN HEAT MIXRACK

## DJ SETUPS

- 1 PIONEER DJM V10 LF MIXER
- 4 PIONEER CDJ 3000 PLAYER
- 1 PIONEER DJM 900 NSX2 MIXER
- 4 PIONEER CDJ 2000 NXS2 PLAYER
- 2 PIONEER XZ 4 CH ALL IN ONE CONTROLLER

## RADIO MICROPHONES

- 4 SHURE AXIENT AD4D
- 4 SHURE UR4
- 6 SHURE QLXD4
- 5 SHURE ULXP4 BETA 87A
- 7 SENNHEISER G3 WIRELESS HEADSET
- 5 SHURE ANTENA SET
- 5 SENNHEISER ANTENA SET





# OUR EQUIPMENT



## QUANTITY

## IN EAR

- 12 SENNHEISER G3 IN EAR
- 2 SENNHEISER G2 IN EAR
- 6 SHURE CABLED IN EAR STEREO
- 2 SHURE CABLED IN EAR MONO
- 8 CABLED IN EAR

## MICROPHONES

- 21 SHURE SM58
- 10 SHURE BETA58
- 10 SHURE SM57
- 11 SHURE BETA57
- 14 AKG C411
- 1 SHURE PG58
- 1 AUDIX ADX 51
- 1 SENNHEISER E965
- 1 SAMSON R21
- 2 SUPERLUX E109
- 3 SUPERLUX PRO228A
- 1 SENNHEISER E855
- 1 AKG M PA-1
- 1 SHURE BETA 52A
- 2 AKG c1000s
- 2 BEHRINGER CI
- 10 LECTERN MICROPHONE





# OUR EQUIPMENT

www.demosesisik.com



## QUANTITY

## DRUM KITS

1 D112  
4 C518  
2 AKG C1000S

## DRUM KIT(SHURE PG)

1 PG 52  
3 PG 56  
2 PG81

## DRUM KIT (SHURE BETA)

1 BETA52A  
1 BETA91A  
4 A98D  
2 SM81

## DRUM KIT (SENNHEISER)

1 E9 01  
3 E9 04  
1 E9 05  
2 E914





# OUR EQUIPMENT



## QUANTITY

## DI BOXES

- 16 RADIAL JPC M H3
- 8 RADIAL J48
- 1 RADIAL JS3 (MIC SPLITTER)
- 12 KLARK TEKNİK DN100
- 6 LD
- 5 DBX
- 2 BEHRINGER

## MULTICORE

- 1 DOUBLE TABLE MULTICORE 48CH
- 5 8 CHANNEL MULTICORE
- 1 16 CHANNEL MULTICORE
- 2 4 CHANNEL MULTICORE
- 1 16 CHANNEL STAGEBOX
- 1 24 CHANNEL STAGEBOX

## MIC STANDS

- 40 LONG
- 25 SHORT





# OUR LIGHTING SYSTEM

www.demosesisik.com



## QUANTITY

## MOVING HEADS

28	AMERIKAN DJ FOCUS PROFILE 400W
12	SGM IDEA SPOT V2
24	CLAY PAKY 700 HPE SPOT

## LED WASH

16	DTS NICK NRG 1201
48	AMERICAN DJ XR 48
32	ACME ICARUS 320 WASH
4	MOVING HEAD EURO
12	GEMINI 360 WASH FX
40	LED PAR

## STROBE

12	ATOMIC 3000
16	BLINDER
2	HZR 400 HAZER(OIL)
2	FOCUS HAZER(WATER)
4	EURO CLUB 3000 SMOKE
1	EURO CLUB 1500 SMOKE
4	EURO CLUB COLOR SİS

## FRESNEL

11	FILMGEAR 2000W
10	FILMGEAR 1000W
6	QUARTZ 2000W
11	25-50 ETC
8	25-40 ETC







**QUANTITY**

**DIMMERS**

- 2 SGM 24CH DIMMER
- 1 LIGHT PUTTER 24CH
- 3 EUROLIGHT 12CH DIMMER3
- 2 EUROLIGHT 6CH DIMMER

**SPLITTERS**

- 6 AVOLITES SPLITTER
- 1 IMPACT 5PIN(8CH)
- 4 IMPACT 3PIN(12CH)
- 1 AVOLITES 5PIN
- 1 AVOLITES 3PIN

**LIGHT CONSOLS**

- 2 GRAND MA FULL SIZE
- 2 GRAND MA 2
- 1 AVOLITES PEARL 2010
- 1 AVOLITES PEARL 2008
- 1 AVOLITES TIGER TOUCH 2
- 1 SGM PLOT 2000
- 2 HIGHLINE 48 DIMMER LIGHT
- 2 SCENIC 12CH

**PANO SYSTEM**

- 1 400 KW CAMLOG
- 3 125 KW
- 1 125 KW SPLITTER
- 1 63 KW
- 1 63 MONO 32







## QUANTITY

## TRUSS

35	BAR 3M FOLDABLE
8	BAR 2M FOLDABLE
3	BAR 1M FOLDABLE
2	BAR 1M DEVICE

## ROOF BRANDA

2	14X12
2	12X12
1	12X9
1	9X9

## TRUSS LEGS

28	3M 40X40
20	2M 40X40
16	1,5M 40X40

## WORK LIFTS

4	FENIX
4	EUROLIFT

## MOTOR SYSTEM

16	MOTOR	
2	MOTOR PANO SYSTEM	8CH
4	MOTOR PANO SYSTEM	6CH





# OUR LED SCREEN SYSTEMS



## QUANTITY

300 M2

## LED SCREEN

PIXEL PITCH 2.97MM  
 PIXEL DENSITY 112896PIXEL/m  
 PANEL DIMENSION(WxHxD)  
 S00M MxS00M Mx78M M

19.7"x19.7"x3.1"

BRIGHTNESS 1000-1300N ITS  
 PANEL WEIGHT 8.30KG/18.30LB  
 IP RATING IP30



Hanging Lock

Locating Pin

Side Lock

Buckle Of Back Cover

Test Buttan

Back Cover

Foldable Module Handle



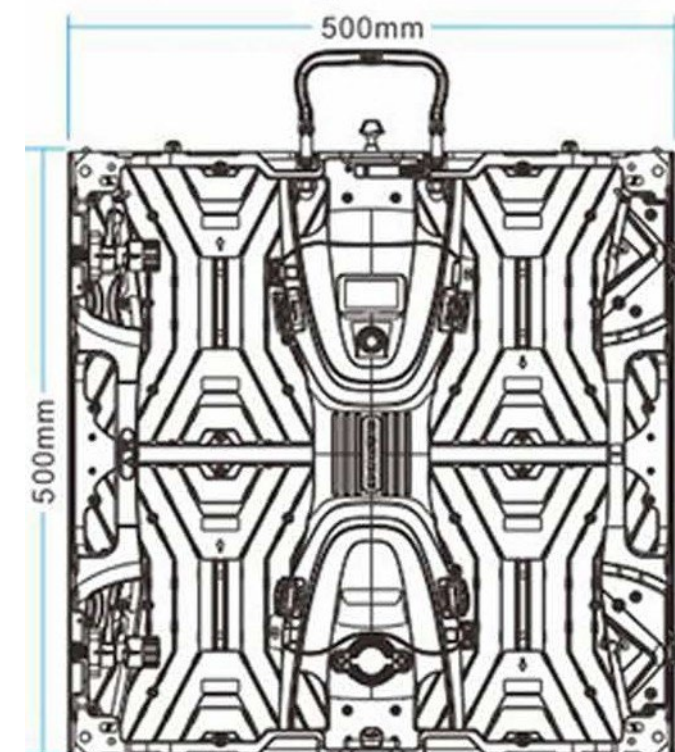
Lifting Handle  
 Innovative Curve  
 Dial Locks

LCD  
 Data Connector  
 (Input/Output)

Handle

Power Connector  
 (Input/Output)

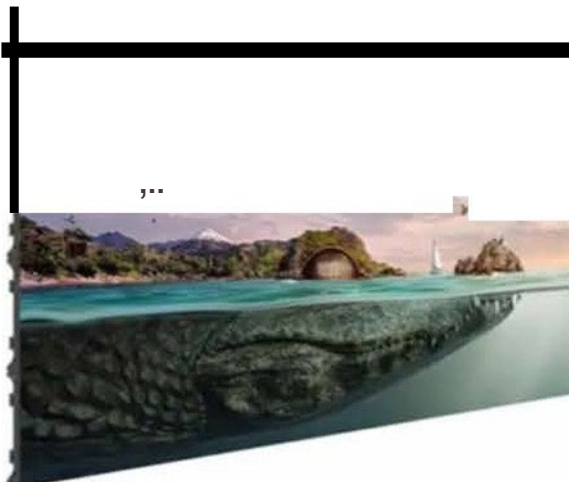
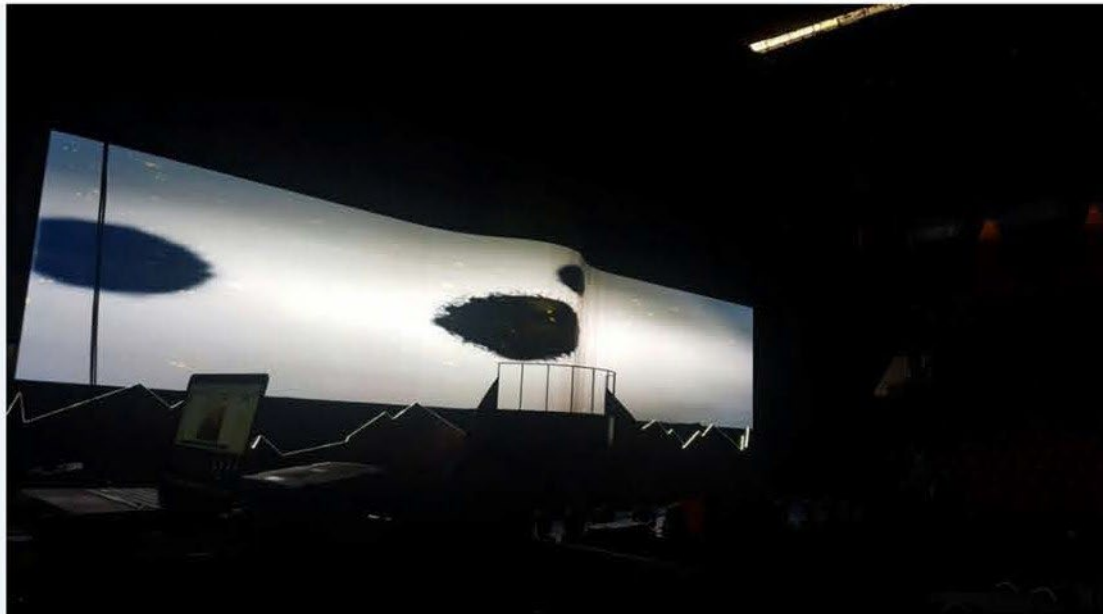
Fixing Point  
 Of Sfacking  
 Installation





# OUR LED SCREEN SYSTEMS

[www.demosesisik.com](http://www.demosesisik.com)



Hanging Installation  
Max 10meters high



Stacking installation  
Max 10meters high





# OUR STAGE SYSTEMS

www.demosesisik.com



## QUANTITY

## STAGE SYSTEM

400

2X1 STAGE SYSTEM

## LEG SYSTEM

800

50CM

400

100CM

600

150CM

400

200CM





# OUR PROJECTS

[www.demosesisik.com](http://www.demosesisik.com)





# OUR PROJECTS

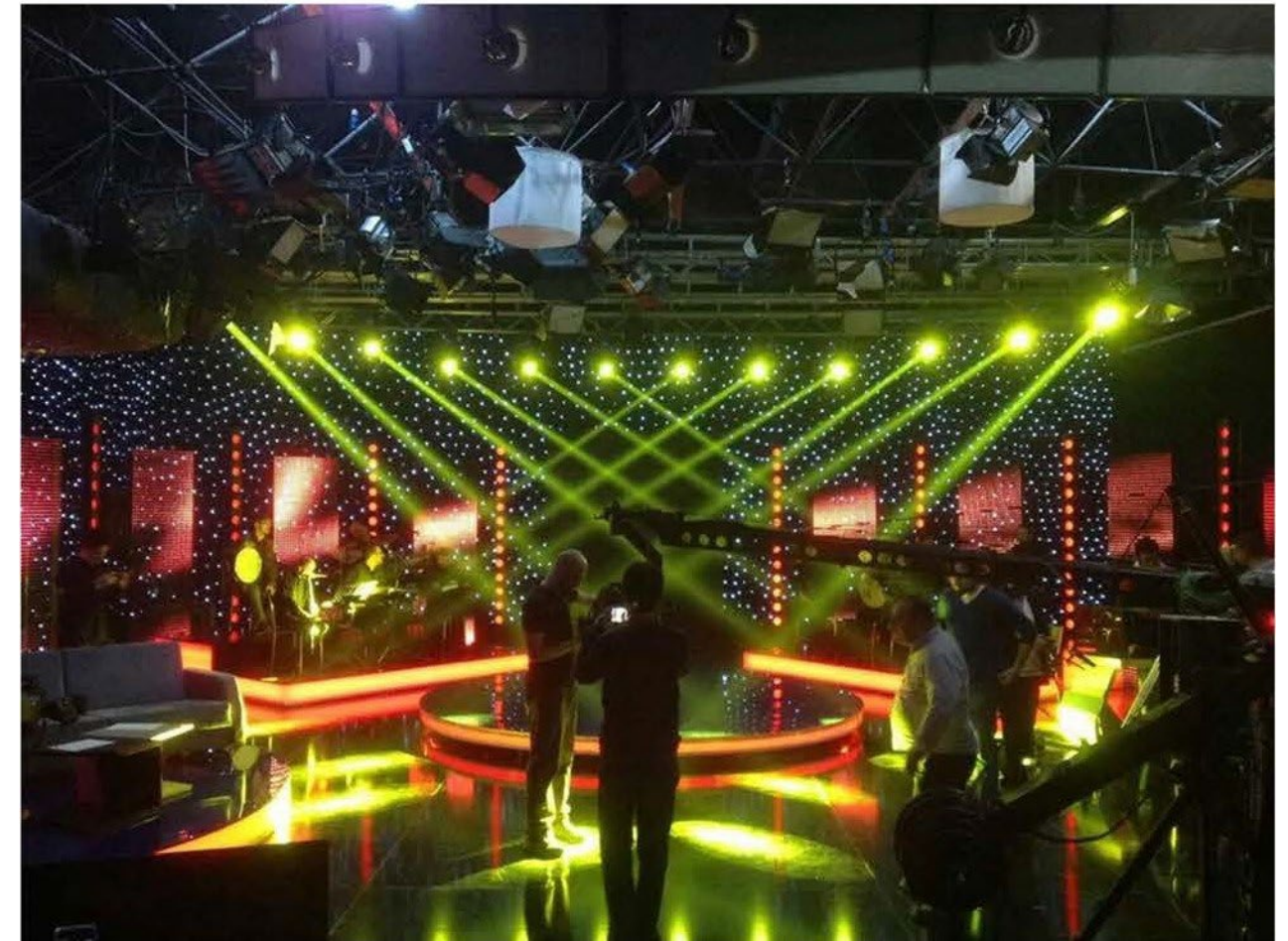
[www.demosesisik.com](http://www.demosesisik.com)



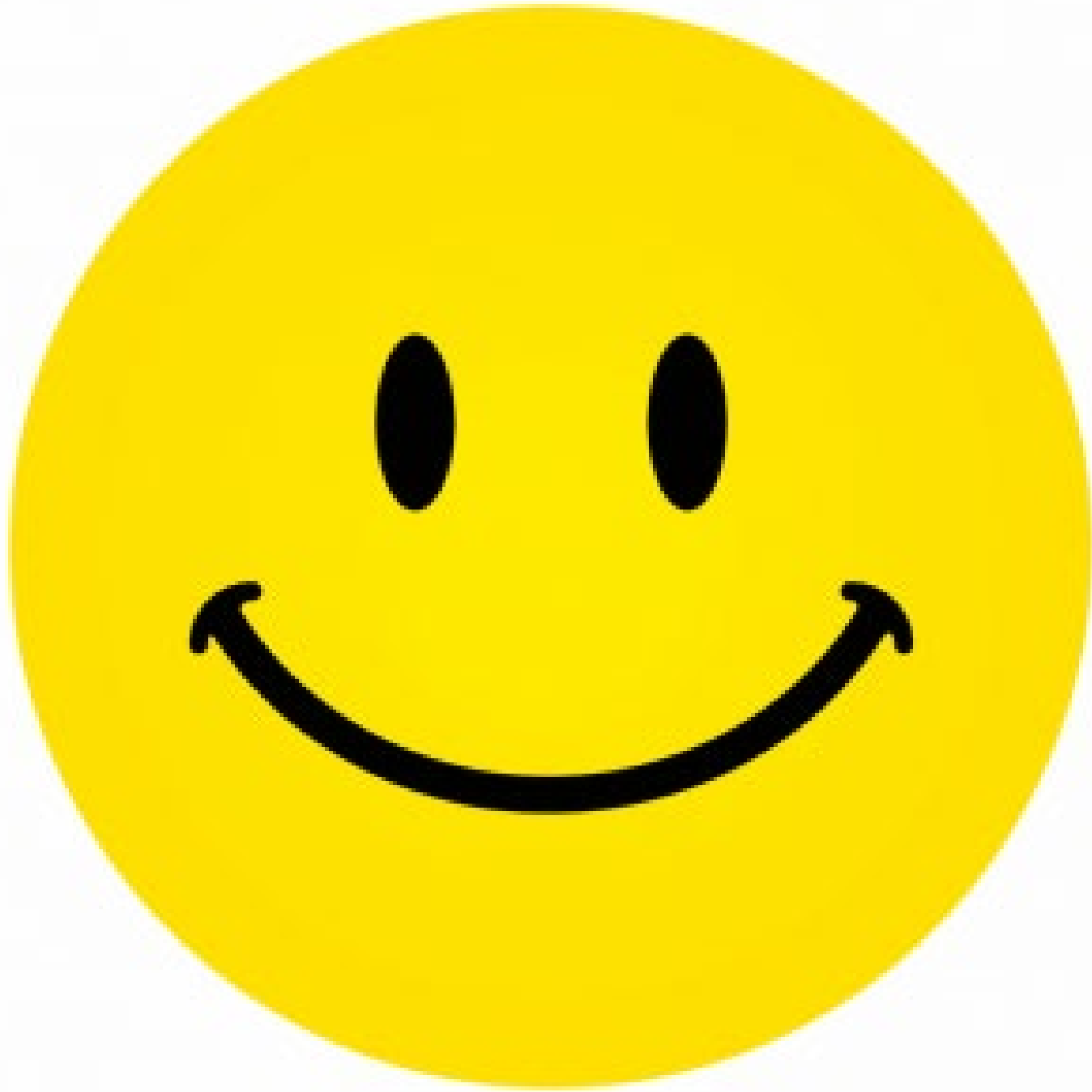


# OUR PROJECTS

[www.demosesisik.com](http://www.demosesisik.com)







THANK YOU

[WWW.DEMOSESISIK.COM](http://WWW.DEMOSESISIK.COM)